



# AlwaysUp Command-Line Tools Manual

Version 7.0

0.	Version History .....	2
1.	Introduction .....	3
2.	Key Features & Benefits .....	4
3.	System Requirements .....	5
4.	InstallService .....	6
4.1.	Command Line Syntax .....	6
4.2.	Command Line Options .....	6
4.2.1.	General .....	7
4.2.2.	Logon .....	8
4.2.3.	Monitoring .....	9
4.2.4.	Customized "Sanity Checks" .....	11
4.2.5.	Notification (via E-Mail) .....	12
4.2.6.	Startup .....	13
4.3.	Return Codes .....	13
4.4.	Examples .....	13
4.5.	Using the AlwaysUp GUI to Create the Command Line .....	14
4.6.	Using the AlwaysUp GUI to Create an XML file .....	16
5.	UninstallService .....	17
5.1.	Command Line Syntax .....	17
5.2.	Return Codes .....	17
5.3.	Examples .....	17
5.4.	Using SC .....	17
6.	AlwaysUpService .....	19
6.1.	Export to XML .....	19
6.2.	Start or Restart your Application in the Current Session .....	19
7.	Starting and Stopping AlwaysUp Services with the NET Command .....	20
7.1.	To Start a Service .....	20
7.2.	To Start a Service in a Specific Session .....	20
7.3.	To Start a Service in a Specific User's Session .....	21
7.4.	To Stop a Service .....	21
8.	Files to Distribute with your Applications .....	23
9.	Licensing & Registration .....	24
10.	Troubleshooting and Reporting Problems .....	25
11.	Appendix I: The Sanity Check Utility .....	26
11.1.	Special Command Line Variables .....	26
11.2.	Checking a Web Server with http-ping .....	27
12.	Appendix II: The InstallService XML .....	28
13.	Appendix III: Remote Desktop and Terminal Services Sessions .....	30
14.	Appendix IV: AlwaysUp Web Service .....	31
15.	Appendix V: AlwaysUp Event Log Messages .....	32

---

## 0. Version History

<i>Version</i>	<i>Date</i>	<i>Updates</i>
7.0	2010-02-21	Intelligent restarting/rebooting; wait time when stopping; support the "Automatic (Delayed Start)" option; support for suspending the computer while waiting to restart the application
6.8	2008-12-01	Added support for starting/restarting in specific sessions, sanity check reboots, capping restart attempts.
6.7	2008-06-01	Plain text mail format support.
6.5	2007-11-01	Startup pause.
6.4	2007-10-04	Start "in session"; Ensure network is up option; Stop command; Capture output; Automation.
6.2	2007-08-19	New features: The main window can be adjusted on startup (minimized/maximized/normally; on top).
6.0	2007-03-12	Support Windows Vista; Site & OEM Branding.
5.7	2006-10-29	New features: Hide UI, restart-delay, etc.
5.5	2006-08-25	New features: XML support, restore network drives, prevent close at logoff.
5.0	2006-05-01	Initial version (from previous plain-text format)

## 1. Introduction

The AlwaysUp command-line tools (CLT) are designed to run and manage any Win32 executable, batch file, or shortcut as a Windows service. Developers can easily integrate and distribute them as a part of their own applications.

Find out more about AlwaysUp CLT at:

<http://www.coretechnologies.com/products/AlwaysUp/AlwaysUpCLT/>

---

## 2. Key Features & Benefits

- Runs your application (32/64-bit executable, batch file or shortcut) as a Windows Service
- Monitors your application and restarts it whenever it fails
- Able to manage virtually any Win32 application with minimal configuration
- Able to detect and restart applications that hang, hog the CPU or consume too much memory.
- Able to start your application as the system boots, to run when no user is logged in and to run despite logon/logoffs -- all to guarantee uptime without manual user intervention
- Able to restart your application (or reboot the computer) at a scheduled time
- Able to boost your application's priority to ensure that it gets preferential treatment on the host computer
- e-mails you with details of crashes, restarts and other problems
- e-mails you daily or weekly reports on your application's performance
- Supports the integration of your own custom "sanity check" utilities, executed regularly to test if your application is functioning normally or not
- Automatically dismisses common "Application error" dialog boxes that prevent crashed applications from fully exiting
- Automatically dismisses Debug dialog boxes and logs the dialog box text for subsequent review by developers -- thus facilitating the deployment of applications in "Debug mode"
- Leverages the Windows Services API to achieve robust, low-level application control in a secure environment
- Reports all activities to the Windows Event Log
- Supports automation, to automatically fill in forms, dismiss dialogs, etc.
- Captures output from console applications.
- Very efficient; demands minimal CPU & memory resources
- No programming required!
- Easily integrates into installers

There are three programs in the suite, namely **InstallService**, **UninstallService**, **AlwaysUpService**. Section 4 describes these programs in detail.

### 3. System Requirements

- A Pentium-compatible PC
- Windows 7 / Vista / XP or Windows Server 2008 / 2003 (x86 and x64 versions).
- 5 MB free hard drive space for installation files.

The AlwaysUp components that manage and monitor your application are designed to be extremely frugal with machine resources. They almost always consume less than 1% of the CPU, less than 8 MB of RAM, and don't fall victim to the "Memory Growth" characteristic of many applications today.

## 4. InstallService

InstallService is used to install an application to run as a Windows Service.

### 4.1. Command Line Syntax

The command line syntax for InstallService is:

***InstallService.exe <Service name> <App> [Options]***

or, to install using an XML file:

***InstallService.exe -xml <XML file name>***

where:

**<Service name>** is the name of the service. The maximum length is 200 characters. Forward-slash (/) and back-slash (\) can not be used.

**<App>** is the full command line for running the application to be monitored. If the command line contains spaces, care must be taken to ensure that it is interpreted correctly. Be sure to enclose each component that contains spaces in “backslash quotes” (\”), and then quote the whole command line. For example:

C:\Program Files\Server\Server.exe -f C:\My Files\config.xml

should be expressed as:

“C:\Program Files\Server\Server.exe” -f “C:\My Files\config.xml”

**<XML file name>** is the full path to an existing XML file describing the service. Additional details about the XML format is available in Appendix II.

**[Options]** are one or more options described in the next section.

*Note: Be sure to use quotes around parameters containing spaces.*

### 4.2. Command Line Options

To facilitate feature-driven access, we present the command line options grouped by functionality.

### 4.2.1. General

-w	<ul style="list-style-type: none"> <li>Specifies the application's working directory. Be sure to enclose paths that contain a space in quotes ("").</li> </ul>
-n	<ul style="list-style-type: none"> <li>Start the service/application "Manually" from the Service Control Manager (or the GUI-based AlwaysUp).</li> <li>If not specified, the behavior will default to "Automatic", and the service/application will be started when Windows boots.</li> </ul>
-nd	<ul style="list-style-type: none"> <li>Configure the service/application to start "Automatically (Delayed Start)", 1-2 minutes after Windows boots. Note that this option is only meaningful on Windows Vista and later.</li> </ul>
-dp <mask>	<ul style="list-style-type: none"> <li>On multi-processor systems, restrict the application to run on one or more specific CPUs.</li> <li>&lt;mask&gt; is a bit vector representing the chosen CPUs. Each bit represents a CPU, with: <ul style="list-style-type: none"> <li>1 = CPU #1</li> <li>2 = CPU #2</li> <li>4 = CPU #3</li> <li>8 = CPU #4 (etc.)</li> </ul> </li> <li>For example, to specify CPU #1 and CPU #4, the &lt;mask&gt; value is 1 + 8 = 9. To select CPU #1, #2 and #3, use 1 + 2 + 4 = 7.</li> </ul>
-f <priority> <reduce>	<ul style="list-style-type: none"> <li>&lt;priority&gt; specifies the application's priority: <ul style="list-style-type: none"> <li>Idle = 1</li> <li>BelowNormal = 2</li> <li>Normal = 3</li> <li>Above</li> <li>High = 5</li> <li>Real-time = 6</li> </ul> </li> <li>&lt;reduce&gt; indicates if the application's priority should be reduced to Normal when a user logs on to the computer: <ul style="list-style-type: none"> <li>No = 0</li> <li>Yes = 1</li> </ul> </li> <li>If not specified, the application is run at Normal priority.</li> </ul>
-mm	<ul style="list-style-type: none"> <li>Show the application's main window minimized when it starts.</li> </ul>
-mx	<ul style="list-style-type: none"> <li>Show the application's main window maximized when it starts.</li> </ul>
-nn	<ul style="list-style-type: none"> <li>Show the application's main window normally when it starts.</li> </ul>
-kt	<ul style="list-style-type: none"> <li>Keep the application's main window on top of others.</li> </ul>

-st <cmd line>	<ul style="list-style-type: none"> <li>• Use the given command to stop the application.</li> <li>• &lt;cmd line&gt; is the full command line for the program to run, including any arguments. Please use quotes around each element if the command line contains spaces.</li> <li>• AlwaysUp will wait up to 30 seconds for the command to complete before terminating the application.</li> <li>• See <a href="#">section 11.1</a> for special command-line values.</li> </ul>
-sw <seconds>	<ul style="list-style-type: none"> <li>• Wait up to &lt;seconds&gt; seconds for the application to stop gracefully before AlwaysUp forcibly terminates it.</li> </ul>
-of <file>	<ul style="list-style-type: none"> <li>• Log the application's output (from stdout and stderr) to the given file.</li> <li>• &lt;file&gt; is the full path to the file where the output will be saved. Please use quotes if the name contains spaces.</li> <li>• This will work for console-based applications, not regular Windows applications.</li> </ul>
-om <MB>	<ul style="list-style-type: none"> <li>• When logging output, don't let the file size exceed the given &lt;MB&gt; value (in Mega-Bytes).</li> <li>• If the file grows to &lt;MB&gt; MB in size, the oldest ¼ will be discarded to make room for new data.</li> </ul>

#### 4.2.2. Logon

-l <account>	<ul style="list-style-type: none"> <li>• &lt;account&gt; is the name of a user, under which the service shall run.</li> <li>• Note: This account needs to have the "Log on as a service", which can be granted from the "Control Panel / Administrative Tools / Local Security Settings" application (Local Security Policy on Windows 2000) . If not, it will not be able to start.</li> <li>• It is recommended that this user be a member of the "Administrators" group or the application may not be able to show its windows.</li> <li>• &lt;account&gt; should have the following format: "&lt;Domain&gt;\&lt;user&gt;", "Zone1\user4" for instance.</li> <li>• The domain "." is predefined as the local machine. So one might use ".\user1" too.</li> <li>• If not specified, the service/application will be run under the built-in "LocalSystem" account.</li> </ul>
-p <password>	<ul style="list-style-type: none"> <li>• The password for the user account under which the service shall run.</li> </ul>
-lh	<ul style="list-style-type: none"> <li>• Specify this flag to hide the application's windows and task bar icons when a user logs on.</li> </ul>

### 4.2.3. Monitoring

-k	<ul style="list-style-type: none"> <li>Keep the program alive, restarting it when it crashes or exits unexpectedly.</li> <li>AlwaysUp will log a message to the Windows Event Log whenever it restarts the application.</li> </ul>
-c [<ms>]	<ul style="list-style-type: none"> <li>Check interval. &lt;ms&gt; is the number of milliseconds to pause in between checks to see if the program has crashed, or is displaying a message box.</li> <li>Defaults to 2000 if not specified.</li> </ul>
-m	<ul style="list-style-type: none"> <li>Dismiss common “application crashed” message boxes, logging their content to the event Log.</li> </ul>
-ms	<ul style="list-style-type: none"> <li>When dismissing common “application crashed” message boxes, immediately stop the application when the most serious are encountered.</li> </ul>
-z <mb>	<ul style="list-style-type: none"> <li>Stop the application when it grows larger &lt;mb&gt; megabytes.</li> </ul>
-q <min>	<ul style="list-style-type: none"> <li>Stop the application if it “hogs” a CPU for longer than &lt;min&gt; minutes.</li> <li>The application is designated a “CPU hog” if it consumes more than 95% of the CPU over the given duration.</li> </ul>
-v <min>	<ul style="list-style-type: none"> <li>Stop the application if it “hangs” for longer than &lt;min&gt; minutes.</li> </ul>
-y <day> <time> <reboot>	<ul style="list-style-type: none"> <li>Stop the application regularly, at a given time.</li> <li>&lt;day&gt; is a numeric representation of the day: Monday = 1 Tuesday = 2 Wednesday = 3 Thursday = 4 Friday = 5 Saturday = 6 Sunday = 7 Daily = 8 (every day)</li> <li>&lt;time&gt; represents a 24-hour time value in the format HH:MM:SS. Please be sure to specify the three numbers. For example, 3:30 AM is represented as “03:30:00” and 4 PM is “16:00:00”.</li> <li>&lt;reboot&gt; indicates if the computer should be rebooted or not, with: No = 0 Yes = 1</li> </ul>
-ym <mb>	<ul style="list-style-type: none"> <li>When stopping the application at a given time, only stop it if it has grown larger than &lt;mb&gt; megabytes.</li> </ul>

-ym <mb>	<ul style="list-style-type: none"> <li>When stopping the application at a given time, only stop it if it has grown larger than &lt;mb&gt; megabytes.</li> </ul>
-yi <min>	<ul style="list-style-type: none"> <li>When stopping the application at a given time, only stop it if it has been idle for at least &lt;min&gt; minutes.</li> </ul>
-yl	<ul style="list-style-type: none"> <li>When stopping the application at a given time, only stop it if no one is logged on.</li> </ul>
-yt <min>	<ul style="list-style-type: none"> <li>When stopping the application at a given time, keep trying to stop for &lt;min&gt; minutes if not all conditions are met at the chosen time.</li> </ul>
-da	<ul style="list-style-type: none"> <li>When the application stops, restart it on the next hour.</li> </ul>
-db	<ul style="list-style-type: none"> <li>When the application stops, restart it on the next hour or half-hour.</li> </ul>
-dc <seconds>	<ul style="list-style-type: none"> <li>When the application stops, restart it after the given number of &lt;seconds&gt;.</li> </ul>
-dt <time>	<ul style="list-style-type: none"> <li>When the application stops, restart it at a specific time.</li> <li>&lt;time&gt; must be in the 24-hour format "HH:MM:SS". For example "17:30:00" represents 5:30 PM.</li> </ul>
-df	<ul style="list-style-type: none"> <li>Perform the delay on the first run, when AlwaysUp starts up and runs your application for the first time.</li> </ul>
-ds	<ul style="list-style-type: none"> <li>Suspend the PC while waiting to start the application.</li> </ul>
-ac <cmd> <i>	<ul style="list-style-type: none"> <li>Run the given automation script/program regularly.</li> <li>&lt;cmd&gt; is the full command line of the script/program. Be sure to use quotes around each element if the command line contains spaces. See <a href="#">section 11.1</a> for special command-line values.</li> <li>&lt;i&gt; specifies the interval (in seconds) between each run of the automation program.</li> <li>See this page for sample Autolt scripts: <a href="http://www.coretechnologies.com/products/AlwaysUp/Autolt/">http://www.coretechnologies.com/products/AlwaysUp/Autolt/</a></li> </ul>
-an <num-times>	<ul style="list-style-type: none"> <li>Only run the automation program a few times after the application starts.</li> <li>&lt;num-times&gt; is the number of times to run, after which the automation script will retire.</li> </ul>

---

#### 4.2.4. Customized “Sanity Checks”

See Appendix I for details on the “Sanity Check” feature.

<code>-t &lt;cmd line&gt;</code>	<ul style="list-style-type: none"><li>• Perform a periodic "Sanity check" on the program being managed. The &lt;cmd line&gt; is the full command line of the sanity check program, e.g. "C:\apps\testServer.exe 10.10.10.10 4552". Please use quotes around each element if the command line contains spaces.</li><li>• The program must complete with an error status of 0 to be considered successful. If unsuccessful, the application will be restarted.</li><li>• See <a href="#">section 11.1</a> for special command-line values.</li></ul>
<code>-a &lt;ms&gt;</code>	<ul style="list-style-type: none"><li>• Check sanity interval. &lt;ms&gt; is the number of milliseconds to pause in between runs of the sanity check program.</li><li>• Defaults to 30000 if not specified.</li></ul>
<code>-x &lt;ms&gt;</code>	<ul style="list-style-type: none"><li>• Check sanity timeout interval. Wait up to &lt;ms&gt; milliseconds for a response from the check sanity program. If none is received, consider the result a failure. This will cause the program to be terminated.</li><li>• The default value is 120000 if not specified.</li></ul>

### 4.2.5. Notification (via E-Mail)

-o <address>	<ul style="list-style-type: none"> <li>• &lt;address&gt; is the the "To" address for all email messages. Multiple addresses can be specified by separating them with a comma and placing the whole value in quotes, for example: "admin@myserver.com, system@myserver.com".</li> <li>• (Note: this is the letter 'o', not a zero)</li> </ul>
-g <smtphost>	<ul style="list-style-type: none"> <li>• &lt;smtphost&gt; is the name or IP address your SMTP mail server. For example "mail.mydomain.com" or "smtp.gmail.com".</li> <li>• Defaults to "mail" if not specified.</li> </ul>
-h <address>	<ul style="list-style-type: none"> <li>• &lt;address&gt; will be placed in the "From:" field of mail sent via SMTP. For example, <a href="mailto:brian@mydomain.com">brian@mydomain.com</a></li> <li>• If not specified, the mail sent may not have a "From:" address.</li> </ul>
-3 <name>	<ul style="list-style-type: none"> <li>• The real name to be placed in the "From:" field of email sent via SMTP. For example, "Brian Smith".</li> <li>• If not specified, the email sent may not have a "From:" name.</li> </ul>
-b	<ul style="list-style-type: none"> <li>• Send an email message when an "application crashed" message box has been dismissed.</li> </ul>
-r	<ul style="list-style-type: none"> <li>• Send an email message when the application crashes or stops prematurely and has to be restarted.</li> </ul>
-4 <port>	<ul style="list-style-type: none"> <li>• The port number associated with the SMTP mail server.</li> <li>• Defaults to 25 if not specified.</li> </ul>
-5	<ul style="list-style-type: none"> <li>• Indicates that the SMTP server uses SSL to send email.</li> </ul>
-6	<ul style="list-style-type: none"> <li>• Indicates that the SMTP server requires authentication.</li> <li>• An authentication method must be specified (see below)</li> </ul>
-7 <auth>	<ul style="list-style-type: none"> <li>• Specifies the authentication method to be used when sending email.</li> <li>• &lt;auth&gt; is a numeric representation of the authentication method: CRAM-MD5 = 1 AUTH-LOGIN = 2 AUTH-PLAIN = 3 NTLM = 4</li> <li>• All authentication methods except NTLM require a login and password (see below)</li> </ul>
-8 <login>	<ul style="list-style-type: none"> <li>• Specifies the user name/login to access the SMTP mail server.</li> </ul>
-9 <password>	<ul style="list-style-type: none"> <li>• Specifies the password to access the SMTP mail server.</li> </ul>
-tm	<ul style="list-style-type: none"> <li>• Send emails in plain text format instead of HTML.</li> </ul>

-et <text>	<ul style="list-style-type: none"> <li>• Additional text to be included in each email message sent. Please specify at most 30 characters and please put quotes around the value.</li> </ul>
------------	---

#### 4.2.6. Startup

-rn	<ul style="list-style-type: none"> <li>• Automatically restore any network drives accessible to the user who will run the application.</li> <li>• Only works for drives mapped automatically at logon, without the need for the user to type in a password.</li> <li>• May take some time at startup if drive access is "slow".</li> </ul>
-nt	<ul style="list-style-type: none"> <li>• Ensure that the Windows networking components/services are up and running prior to starting the application.</li> </ul>
-pt <s>	<ul style="list-style-type: none"> <li>• Wait for &lt;s&gt; seconds before starting the application.</li> </ul>
-1 <cmd line>	<ul style="list-style-type: none"> <li>• Run the given program at startup, prior to running the application.</li> <li>• &lt;cmd line&gt; is the full command line for the program to run, including any arguments. Please use quotes around each element if the command line contains spaces.</li> </ul>
-11	<ul style="list-style-type: none"> <li>• In addition to at startup, run the startup program (given with the -1 option above) whenever the application is restarted.</li> </ul>
-2 <deps>	<ul style="list-style-type: none"> <li>• Ensure that the given services are started prior to starting the application.</li> <li>• &lt;deps&gt; is the list of service names, available from the Control Panel Services application. Separate multiple names with a comma (,), for example "LmHosts,Netman"</li> </ul>

#### 4.3. Return Codes

InstallService returns 0 (zero) on success and non-zero on failure. When it fails, the reason for failure is reported to the standard output (stdout).

#### 4.4. Examples

1. The following installs the "Notepad" application as a service, which runs notepad.exe on the specified text file, restarting it whenever it crashes or stops unexpectedly:

---

***InstallService Notepad "c:\winnt\notepad.exe c:\data.txt" -k***

2. The following installs the "MyServer" service, which runs "C:\MyServer\MyServer.exe /fast /usermode true" from directory "C:\MyServer\Run" as user "tbrown" with password "thepassword". The application will be restarted whenever it crashes or stops unexpectedly, whenever it uses more than 512MB of RAM, and every day at 3AM. The application will be started only after the "Netman" (Network Connections) service has started. E-mail will be sent to admin@mydomain.com using server "mail.mydomain.com" whenever the application is restarted, or whenever a message box is dismissed:

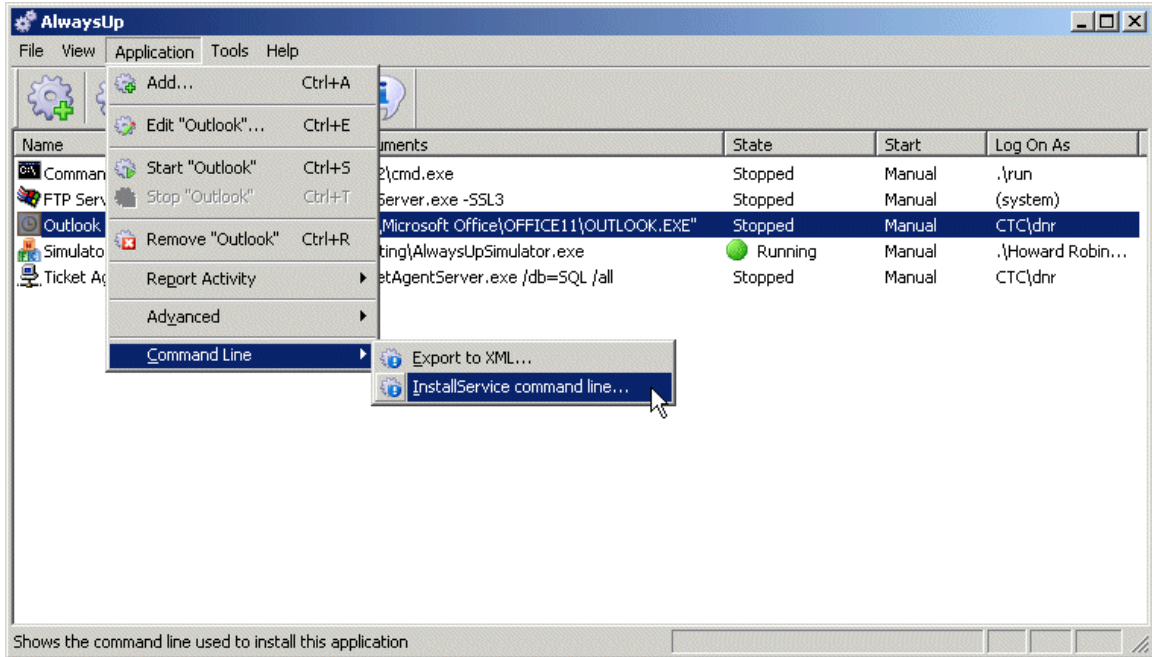
```
InstallService.exe "My Server"  
"C:\MyServer\MyServer.exe /fast /usermode true"  
-k -m -o admin@mydomain.com  
-h alwaysup_report@mydomain.com  
-g "mail.mydomain.com" -r -b -l ".\tbrown"  
-p "thepassword"  
-w "C:\MyServer\Run" -y 8 3 -z 512 -2 "Netman"
```

#### ***4.5. Using the AlwaysUp GUI to Create the Command Line***

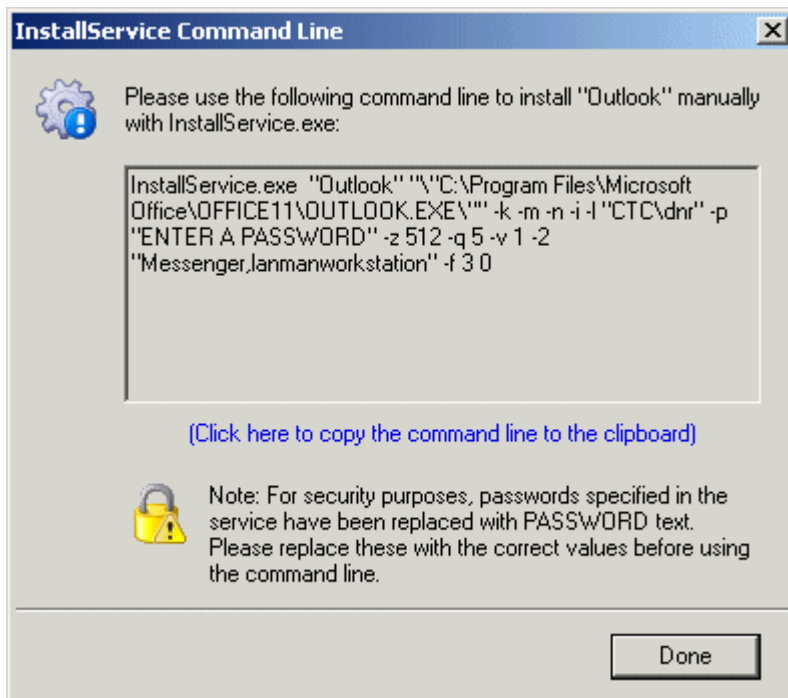
The AlwaysUp GUI can be used to ease the creation of the InstallService command line. Basically, you configure your application/service in the AlwaysUp GUI and select a special OEM menu item to reveal the command line used to install the service.

To use this method:

1. Install the AlwaysUp GUI package (available at <http://www.coretechnologies.com/products/AlwaysUp/>)
2. Copy your license file ("alwaysup.dat") to the location where AlwaysUp was installed (by default, "C:\Program Files\AlwaysUp").
3. Start AlwaysUp
4. Create your service/application
5. Highlight the service in the list and select "Command Line | InstallService command line..." from the "Application" menu:



6. The following window will be presented:



7. Copy the command line from the window by clicking on the hyperlink text.

Note that the "Command Line" menu is NOT available on machines without a command-line license (as specified in the `alwayssup.dat` license file).

#### **4.6. Using the AlwaysUp GUI to Create an XML file**

The AlwaysUp GUI can export an existing AlwaysUp service to an XML file, which can later be used to install the service on another machine.

To use this method:

1. Install the AlwaysUp GUI package (available at <http://www.coretechnologies.com/products/AlwaysUp/>)
2. Copy your license file ("alwaystup.dat") to the location where AlwaysUp was installed (by default, "C:\Program Files\AlwaysUp").
3. Start AlwaysUp
4. Create your service/application
5. Highlight the service in the list and select "Export..." from the "Application" menu.
6. This will bring up a standard "Save As" dialog box where you specify the name of the XML file to be written.

In addition, the AlwaysUp GUI supports simple drag-and-drop from the list of applications to Windows Explorer (or the desktop, etc.) to create a suitable XML file.

## 5. UninstallService

UninstallService will remove a service previously installed with InstallService.

### 5.1. *Command Line Syntax*

The command line syntax for UninstallService is:

***UninstallService.exe <Service name>***

Where:

**<Service name>** is the name of an existing service that was installed using InstallService.

### 5.2. *Return Codes*

UninstallService returns 0 (zero) on success and non-zero on failure. When it fails, the reason for failure is reported to the standard output (stdout). Note that the service will be stopped prior to uninstalling it, so it is not necessary to explicitly stop it before uninstalling.

### 5.3. *Examples*

The following would uninstall the "Notepad" service created in section 2.3:

***UninstallService Notepad***

### 5.4. *Using SC*

The "SC" command (available on Windows 2008/2003/XP and with the NT/2000 resource kit) can also be used to uninstall the service. Please see the following pages for details on SC:

<http://www.microsoft.com/resources/documentation/windows/xp/all/proddocs/en-us/sc.mspx?mfr=true>  
<http://www.ss64.com/nt/sc.html>

When using SC, you must specify the service name with a special suffix added by AlwaysUp when it was installed. For example, if your service is called "Notepad", the name of the service should be "Notepad (managed by AlwaysUpService)". You would invoke SC as:

***SC.exe delete "Notepad (managed by AlwaysUpService)"***

## 6. AlwaysUpService

AlwaysUpService is an internal component distributed with the suite. It is responsible for actually running your application as a service and can be invoked to export an application's configuration as XML, or to start your application in the current session

### 6.1. *Export to XML*

The command line syntax to export an application's configuration as XML is:

***AlwaysUpService.exe <Service name> -exportxml <XML file name>***

Where:

**<Service name>** is the name of an existing service that was installed using InstallService.

**<XML file name>** is the full path to a file name in which to save the XML. The file is overwritten if it already exists.

Please see Appendix II for details on the XML.

### 6.2. *Start or Restart your Application in the Current Session*

If you wish to start or restart your application in the session that you are currently logged in to, the syntax is as follows:

***AlwaysUpService.exe <Service name> -start-in-current-session***

or

***AlwaysUpService.exe <Service name> -restart-in-current-session***

Where:

**<Service name>** is the name of an existing service that was installed using InstallService.

Please see Appendix III for a discussion of Sessions and why you may want to start your application in this manner.

---

## 7. Starting and Stopping AlwaysUp Services with the NET Command

AlwaysUp Service can be manipulated using the “net.exe” command (just as any other service can be).

### 7.1. To Start a Service

Run:

```
net start "<ServiceName> (managed by AlwaysUpService)"
```

Where:

**<ServiceName>** is the name give to the service at installation

Notice that you must add the “(managed by AlwaysUpService)” suffix as that is how the service is actually named in the Service Control Manager.

For example, to start an AlwaysUp service named “Server”, use:

```
net start "Server (managed by AlwaysUpService)"
```

The application will be started in the default session, and will be suitable for most applications (and all of those without a user interface).

### 7.2. To Start a Service in a Specific Session

On systems with multiple sessions, AlwaysUp can be directed to launch the application in a specific session, making the applications windows available to the user logged in there.

Run:

```
net start "<ServiceName> (managed by AlwaysUpService)" /<SID>
```

Where:

**<ServiceName>** is the name give to the service at installation

**<SID>** is the ID of the session where the application is to be run

Notice that you must add the “(managed by AlwaysUpService)” suffix as that is how the service is actually named in the Service Control Manager.

For example, to start an AlwaysUp service named “Server” in session 2, use:

```
net start "Server (managed by AlwaysUpService)" /2
```

Please see Appendix III for a discussion of Sessions and why you may want to start your application in this manner.

### **7.3. To Start a Service in a Specific User’s Session**

On systems with multiple sessions, AlwaysUp can be directed to launch the application in a user’s session, making the applications windows available to him.

Run:

```
net start "<ServiceName> (managed by AlwaysUpService)"  
/"user:<User-Name>"
```

Where:

**<ServiceName>** is the name give to the service at installation

**<User-Name>** is the user name/login of the user logged in to the session where the application is to be run

Notice that you must add the “(managed by AlwaysUpService)” suffix as that is how the service is actually named in the Service Control Manager.

For example, to start an AlwaysUp service named “Server” in user mjones’s session (so that the application is visible to him), use:

```
net start "Server (managed by AlwaysUpService)" /"user:mjones"
```

Please see Appendix III for a discussion of Sessions and why you may want to start your application in this manner.

### **7.4. To Stop a Service**

Run:

```
net stop "<ServiceName> (managed by AlwaysUpService)"
```

Where:

**<ServiceName>** is the name give to the service at installation

Notice that you must add the “(managed by AlwaysUpService)” suffix as that is how the service is actually named in the Service Control Manager.

For example, to start an AlwaysUp service named “Server”, use:

***net stop "Server (managed by AlwaysUpService)"***

Additional details on the “net” command are available at:

[http://www.ss64.com/nt/net\\_service.html](http://www.ss64.com/nt/net_service.html) and  
[http://www.microsoft.com/resources/documentation/windows/xp/all/proddocs/en-us/net\\_subcmds.mspx](http://www.microsoft.com/resources/documentation/windows/xp/all/proddocs/en-us/net_subcmds.mspx)

---

## 8. Files to Distribute with your Applications

These files should be distributed with your applications:

File name	Description
AlwaysUpService.exe	The main executable for running your application.
InstallService.exe	Used to install the service. It can be deleted after completing your installation process.
UninstallService.exe	Used to uninstall the service. Only necessary if you provide a way to uninstall your application.
AlwaysUpServiceAssistant.dll	Supporting DLL
EventMessageFile.dll	Supporting DLL
GHCrUtils.dll	Supporting DLL

## 9. Licensing & Registration

The AlwaysUp command-line components are free to evaluate for the first 30 days. After the trial period a license must be purchased to continue usage.

If you find the programs useful, we encourage you to license them. The small licensing fee charged will fund continued development of AlwaysUp and will entitle you to expedited support from Core Technologies Consulting LLC, the author of the software.

Please send email to [support@CoreTechnologies.com](mailto:support@CoreTechnologies.com) for licensing details.

## 10. Troubleshooting and Reporting Problems

Please consult the AlwaysUp FAQ for troubleshooting tips and answers to frequently asked questions:

[http://www.coretechnologies.com/products/alwaysup/AlwaysUp\\_FAQ.html](http://www.coretechnologies.com/products/alwaysup/AlwaysUp_FAQ.html)

If you encounter a problem while using AlwaysUp, please send email to:

[support@CoreTechnologies.com](mailto:support@CoreTechnologies.com)

Be sure to include the following information:

- Your Operating System
- The version of AlwaysUp in use
- Detailed steps for reproducing any software bugs/issues

Feel free to send requests for enhancements to the same address.

## 11. Appendix I: The Sanity Check Utility

AlwaysUp can periodically run a program (a “Sanity check utility”) to periodically check if the application being monitored is functioning normally. The utility should exit with a return code of:

- 0 when the check succeeds;
- 1 when the check fails and the application should be stopped and restarted as you have configured;
- 10 when the check fails and the computer should be rebooted;
- 100 when the check fails and your application should be stopped **and not restarted**;
- any other value when the check fails due to an error independent of the application being monitored (such as an error internal to the utility), or to simply indicate failure without causing a restart.

In the third case, the application is not restarted but a message is written to the event log (and an email is sent if so configured).

Note that if the sanity check utility fails to complete in 120 seconds, the application will be restarted.

The popular “ConnectToSocketSanityCheck” program (with full source code) is available in the “SanityCheck” sub-directory. Given a host and port on the command line, it returns 0 if a socket could be opened, 1 if the socket could not be opened, and -1 if there was an internal error initializing the sockets API. It can be used to check if a TCP/IP application, such as a web server, is accepting connections.

### 11.1. *Special Command Line Variables*

AlwaysUp is able to pass your Sanity check program one or more “special” values. Compose your command line with the appropriate string and AlwaysUp will make the substitution before invoking your program.

Replacement String	Replaced With
\$ALWAYSUP_PID	The program identifier (PID) of your running application. This can be seen in the Task Manager.
\$ALWAYSUP_EXENAME	The name of the executable run to invoke your application. (Just the name, not the full path.)

For example, to have AlwaysUp pass your Sanity check program the application's program identifier (PID), then your command line might resemble this:

```
C:\myserver\my_check.exe $ALWAYSUP_PID
```

If your main application is running with PID 563, then your Sanity program will be invoked like this:

```
C:\myserver\my_check.exe 563
```

## **11.2. *Checking a Web Server with http-ping***

Our free http-ping utility can also be used to ensure that your web server is serving pages. This sanity check script will use http-ping to try to download a given page from your server and will signal AlwaysUp to restart your application if the download fails:

<http://www.coretechnologies.com/products/alwaysup/check-web-server-sanity-check.bat>

Please edit the script to specify the address of your own web server/page before using it!

Find out more about http-ping here:

<http://www.coretechnologies.com/products/http-ping/>

---

## 12. Appendix II: The InstallService XML

As outlined in section 2.1, the InstallService.exe utility can accept XML describing how the application is to be installed. The XML is governed by the schema available at our web site:

[http://www.coretechnologies.com/products/AlwaysUp/AlwaysUpCLT/alwaysup\\_installservice.xsd](http://www.coretechnologies.com/products/AlwaysUp/AlwaysUpCLT/alwaysup_installservice.xsd)

XML to install the Windows “Notepad” application with AlwaysUp follows:

```
<?xml version="1.0" encoding="UTF-8"?>
<alwaysup-installservice-configuration xmlns:xsi="http://www.w3.org/2001/XMLSchema-instance"
xsi:noNamespaceSchemaLocation="http://www.coretechnologies.com/AlwaysUp/AlwaysUpCLT/a
lwaysup_installservice.xsd">
```

```
  <!-- The name of the service -->
  <name>Notepad Test</name>
```

```
  <!-- An optional description of the service of the service -->
  <description>Installed via XML using AlwaysUp</description>
```

```
  <!-- General settings -->
  <general>
```

```
    <!-- Path to Notepad executable. This may be different on your system! -->
    <application-path>c:\winnt\notepad.exe</application-path>
    <application-arguments></application-arguments>
    <start-directory></start-directory>
    <set-priority priority="normal"/>
    <start type="manually"/>
```

```
  </general>
```

```
  <!-- Log-on settings. -->
  <log-on-as-system/>
```

```
  <!-- Monitoring the application -->
  <monitor>
```

```
    <restart>
      <when-app-crashes/>
      <when-app-hangs enabled="true" for-longer-than="1"/>
      <when-memory-exceeds enabled="true" size="32"/>
      <when-cpu-hogged enabled="true" for-longer-than="5"/>
    </restart>
    <dismiss-messageboxes/>
```

```
  </monitor>
```

```
  <!-- Notification settings. Change to reflect your mail settings. -->
  <notification>
```

```
    <email>
      <to-address>admin@yourdomain.com</to-address>
      <from-name>Administrator</from-name>
      <from-address>alwaysup@yourdomain.com</from-address>
```

```
        <send>
            <when-application-stops/>
            <when-messagebox-dismissed/>
            <daily/>
            <weekly/>
        </send>
        <smtp-server>
            <name>mail.yourdomain.com</name>
            <port>25</port>
        </smtp-server>
    </email>
</notification>

<!-- Startup settings -->
<startup>
    <dependencies enabled="true">
        <service-name>lanmanworkstation</service-name>
    </dependencies>
</startup>

</alwaysup-installservice-configuration>
```

This file is also available at:

[http://www.coretechnologies.com/products/AlwaysUp/AlwaysUpCLT/install\\_note  
pad\\_alwaysup\\_sample.xml](http://www.coretechnologies.com/products/AlwaysUp/AlwaysUpCLT/install_note_pad_alwaysup_sample.xml)

---

## 13. Appendix III: Remote Desktop and Terminal Services Sessions

Whenever a user logs in to a Windows PC, he interacts with a “session” – his own private graphical sandbox with a dedicated desktop and set of windows. PCs with Terminal Services and Remote Desktop software allow multiple users to be logged in to a single PC simultaneously, with each user having his own private session and the illusion of being the only user of the PC. This privacy ensures that application windows in one session are not visible in (nor accessible to) another session. Each session is identified by a unique session ID.

Windows services can be affected by PCs supporting multiple sessions. When the PC boots and services are started, only one session is created and all services will run in that session. Called the “console session”, or “session 0”, this special session may be handled differently by each version of Windows. For example, on Windows 2000, XP and 2003 a user can log in to the console session, but on Windows Vista or Server 2008 it is isolated for security purposes (see “*Impact of Session 0...*” below for details).

When AlwaysUp is running your application in the console session it is not visible in any other session. If you start a Remote Desktop Connection and you are granted another session (with a different ID), you will not be able to interact with your application running in the console session. Tricks such as starting Remote Desktop with the “/console” flag will allow you to connect to the console session on Windows XP and 2003, but will not do the job on Windows Vista or Server 2008 as the console session is isolated there.

If your application is running in a different session, you can use AlwaysUp to run it in the current session and make its windows and tray icons available to you by selecting “Start <app> in this session” or “Restart <app> in this session” from the “Application” menu. Note that restarting will temporarily stop your application.

Additional information:

### **What "sessions" are on Windows NT:**

<http://homepages.tesco.net/~J.deBoynePollard/FGA/windows-nt-session.html>

### **Terminal Services Sessions:**

<http://msdn2.microsoft.com/en-us/library/aa383496.aspx>

### **How Terminal Services Works:**

<http://technet2.microsoft.com/windowsserver/en/library/2cb5c8c9-cadc-44a9-bf39-856127f4c8271033.mspx?mfr=true>

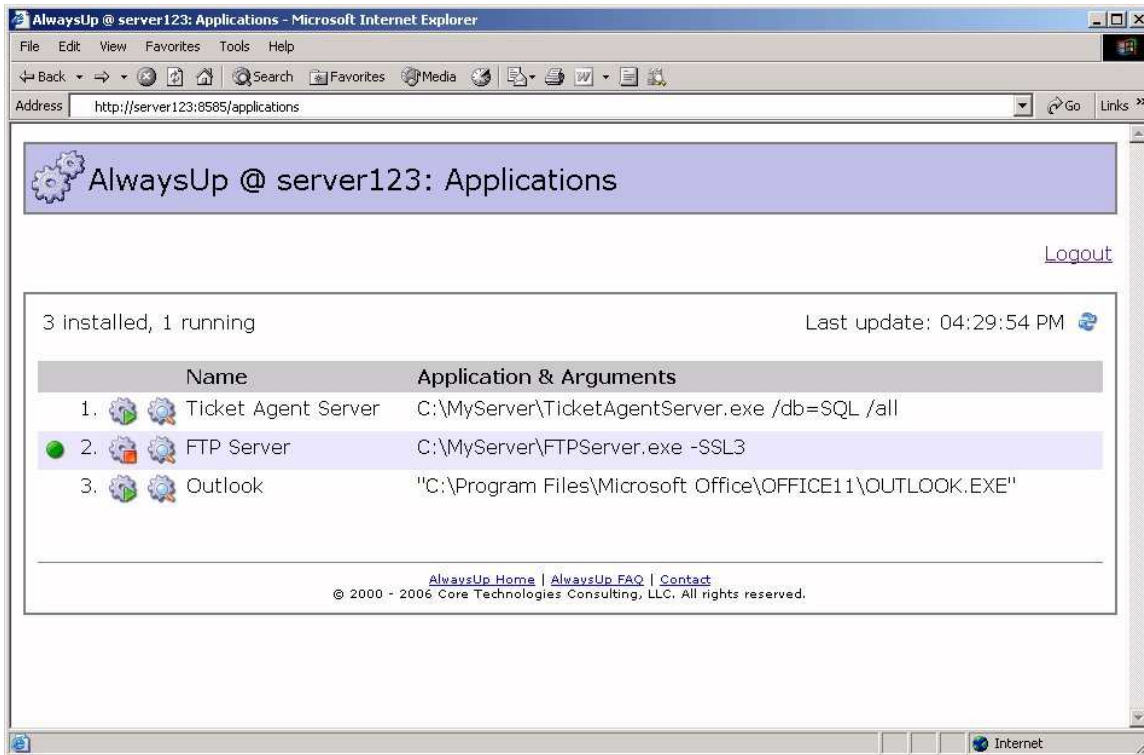
### **Impact of Session 0 Isolation on Services and Drivers in Windows Vista**

<http://www.microsoft.com/whdc/system/vista/services.msp>

## 14. Appendix IV: AlwaysUp Web Service

AlwaysUp Web Service is a free add-on program that allows you to control AlwaysUp from your web browser. Find out more and download the latest version at:

<http://www.CoreTechnologies.com/AlwaysUp/AlwaysUpWebService>



## 15. Appendix V: AlwaysUp Event Log Messages

As is the convention with Windows Services, AlwaysUp reports information, warnings, and errors to the Windows Application Event Log. That log is accessible through the Control Panel [Event Viewer](#) applet.

Each entry is logged on behalf of the related AlwaysUp application. For example, if you have an application called "**MyServer**", then the Event Log will have entries with "**MyServer (managed by AlwaysUpService)**" as the designated source.

The following page presents the various messages that can be logged, along with more detailed information for each situation:

[http://www.coretechnologies.com/products/alwaysup/AlwaysUp\\_EventLog.html](http://www.coretechnologies.com/products/alwaysup/AlwaysUp_EventLog.html)