



ServiceCommander User's Manual

Version 4.0

1. Introduction	2
2. Key Features & Benefits	2
3. System Requirements	2
4. Using ServiceCommander	3
4.1. The Menu	3
4.2. Configuring ServiceCommander.....	4
4.2.1. The Services Tab	4
4.2.2. The Options Tab.....	6
5. Troubleshooting and Reporting Problems	8

1. Introduction

ServiceCommander helps you to take control of your important Windows Services. Use it to easily start, stop, or restart selected services on any computer on your network, all conveniently from the Windows Taskbar.

Find out more about ServiceCommander at the application web site:

<http://www.CoreTechnologies.com/products/ServiceCommander/>

2. Key Features & Benefits

- Start / stop / restart your important services easily from the Windows taskbar ("system tray")
- Assemble your set of services from any computers on your network
- Manipulate all services at once.
- A friendly alternative to Windows Service Control Manager (SCM)
- Avoid having to rely on the net.exe and sc.exe utilities at the command line

But perhaps most important of all, ServiceCommander was designed and implemented by senior software engineers with over 20 years of real-world experience developing robust, mission-critical applications. Our software is of the highest quality, and we stand by it without reservation.

3. System Requirements

- A Pentium-compatible PC
- Windows 7 / Vista / XP or Windows Server 2008 R2 / 2008 / 2003 (x86 and x64 versions).
- 4 MB free hard drive space for installation files.

4. Using ServiceCommander

ServiceCommander resides in the Windows Taskbar – in the cluster of icons at the bottom right of the desktop. Its icon is highlighted in the figure below. When right-clicked, it displays the menu listing your services and allows you to manipulate them:



When you run ServiceCommander for the first time, the “Configure ServiceCommander” window (described in section 4.2) will automatically come up for you to select your services.

4.1. The Menu

The application menu contains the following entries:

Configure...	Select the list of services to manage, setup a hotkey, etc.
<Service 1>	Start / stop / pause / resume / restart this service
<Service2>, etc.	Start / stop / pause / resume / restart this service
All Services	Start / stop / pause / resume / restart all services being managed, simultaneously
Tools	Open the Event Viewer, Services Control Panel or the Task Manager from the sub-menu
About...	Display program information
Exit	Exit ServiceCommander

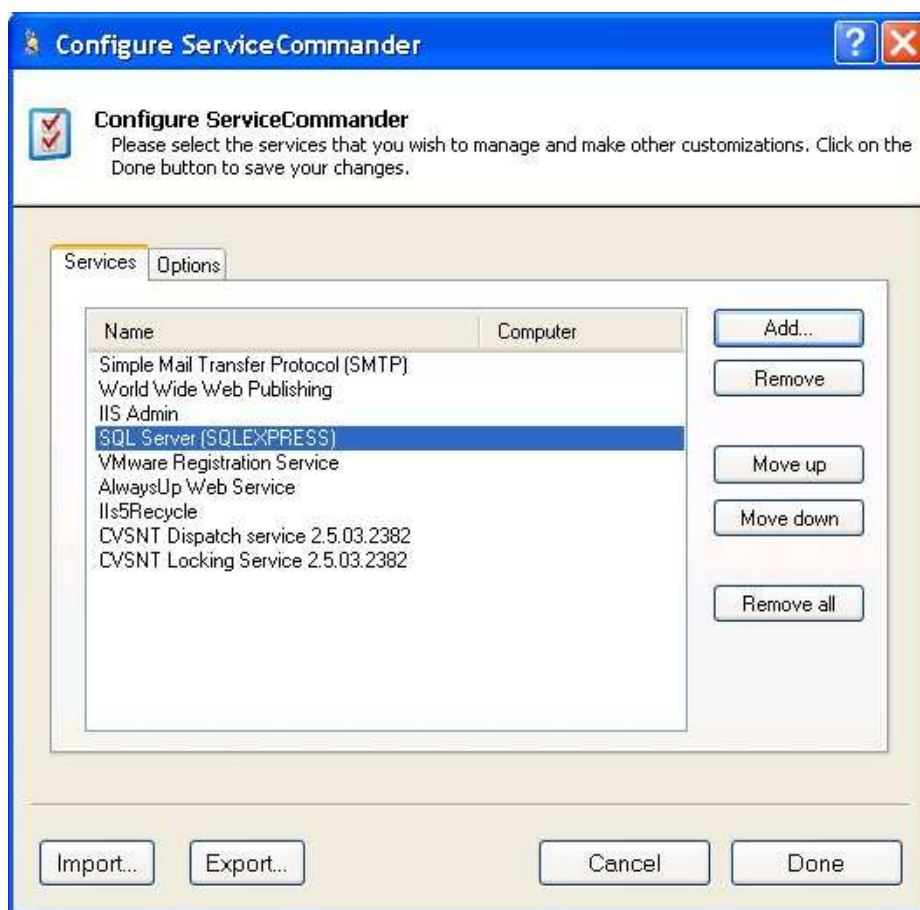
4.2. Configuring ServiceCommander

Selecting the “Configure...” menu entry will summon the Configuration window. It has two tabs – Services and Options. The Services tab will always be shown.

Make your changes and click on the “Done” button to record them.

4.2.1. The Services Tab

The Services Tab is where you to manipulate the list of Windows Services:



Several buttons direct the action:

Add...: Brings up the “Add Services” window described in section 4.2.1.1.

Remove: Removes the selected service(s)

Move up: Moves the selected services closer to the top of the list.

Move down: Moves the selected services closer to the bottom of the list.

Remove all: Removes all services from the list.

Import: Loads configuration settings from a previously exported file (see Export). After clicking the button, you will be prompted to select the file to be imported.

Export: Saves configuration settings to a file. This file can be imported by ServiceCommander on another machine to re-create the settings there (see Import).

4.2.1.1. The Add Services Window

The Add Services Window allows you to choose a set of services from a computer, local or remote:

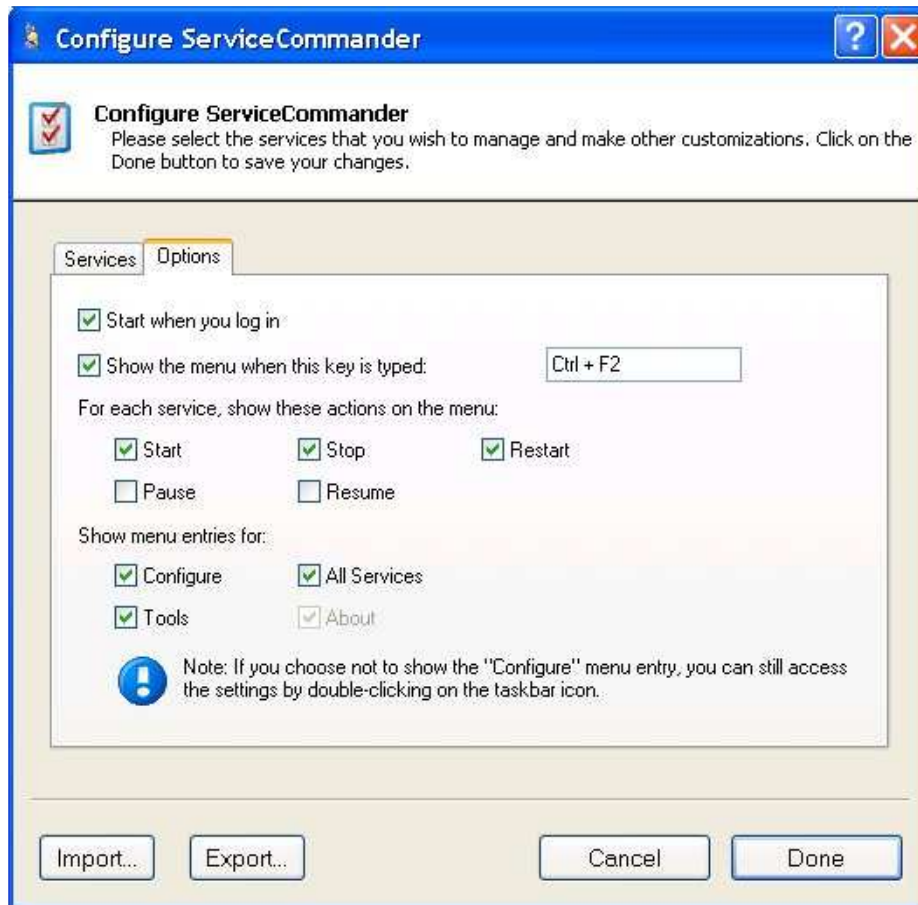


First, select or enter the computer name hosting your services. Select "<Browse...>" from the Computer combo-box to browse your network.

Once the services have been loaded, check the ones of interest and click on the OK button. You will be returned to the "Configure ServiceCommander" window with those services added to your list.

4.2.2. The Options Tab

The Options Tab hosts a few miscellaneous settings:



Start when you log in: Check to have ServiceCommander automatically start when you log in to your computer.

Show the menu when this key is typed: Select a key combination ("hotkey") that will launch the menu without having to click on the taskbar icon. If you are like us, you may find this to be very convenient!

When a hotkey is specified, typing that key will immediately summon the ServiceCommander menu. The menu will be anchored at the location of the mouse cursor.

Show these actions on each service's sub-menu:

Start: Check to show the "Start" action for each service.

Stop: Check to show the "Stop" action for each service.

Restart: Check to show the "Restart" action for each service.

Pause: Check to show the "Pause" action for each service.

Resume: Check to show the "Start" action for each service.

Show these menu entries:

Configure: Check to show the "Configure" entry on the taskbar menu.

All Services: Check to show the "All Services" entry on the taskbar menu, which will allow you to manipulate all services as a group.

Tools: Check to show the "Tools" entry on the taskbar menu, which makes it easy to launch useful utilities (such as the Task Manager).

About: Check to show the "About" entry on the taskbar menu, which shows program information.

5. Troubleshooting and Reporting Problems

If you encounter a problem while using ServiceCommander, please send email to:

support@CoreTechnologies.com

Be sure to include the following information:

- Your Operating System
- The version of ServiceCommander in use
- Detailed steps for reproducing any software bugs/issues

Feel free to send requests for enhancements to the same address.